

**TAPP**

Förzinkat stål

**SPÄRRHAKAR**

Rostfritt stål AISI 304

**FJÄDER**

AISI 301 rostfritt stål.

**VRED**

Glasfiberförstärkt polyamidbaserad (PA) teknopolymer, svart färg, försedd med hål för säkerhetsring.

**TRYCKKNAPP**

Polyamidbaserad (PA) teknopolymer, röd färg, blank yta.

**HÖGSTA ARBETSTEMPERATUR**

Från -20°C till +80°C.

**KÄNNETECKEN OCH ANVÄNDNING**

GN 114.2 kulspärrbult används i allmänhet för snabb fixering eller avslutning av delar som ska bearbetas, särskilt för delar som måste tas bort och återställas kontinuerligt.

**TILLBEHÖR**

För att optimera användningen av kulspärrbultar har utformats:

- kulkedja GN 111 (se sidan 611);
- kabelhållare GN 111.2 (se sidan 612);
- spiralkabel GN 111.4 (se sidan 613).

**SPECIALUTFÖRANDEN PÅ FÖRFRÅGAN**

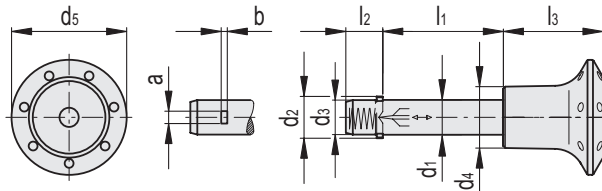
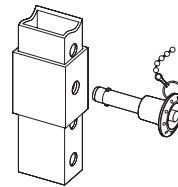
Andra dimensioner.

**BRUKSANVISNING**

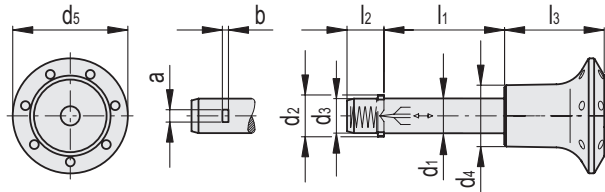
Genom att trycka på knappen frigörs de två spärrhakarna och tappen kan dras ut eller monteras in.



Applikationsexempel

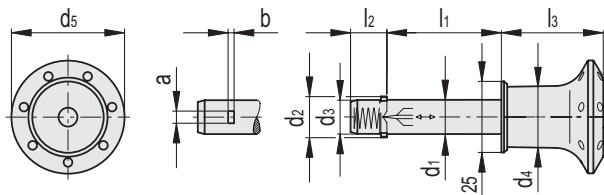
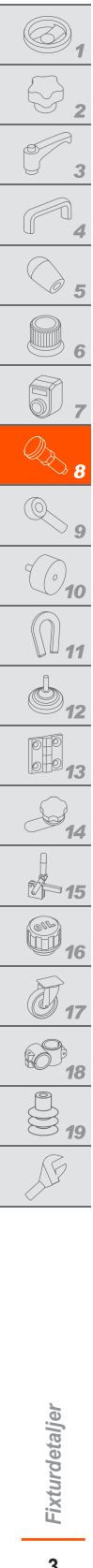


Kod	Benämning	d1 -0.1	d2	d3	d4	d5	l1 +0.4	l2	l3	a	b	Dubbelsidig klippkraft [kN]	Δ
GN.38715	GN 114.2-6-10	6	7.3 +0.5	5.9	15	30	10	7	21	2.3	0.5	14	12
GN.78201	GN 114.2-6-12	6	7.3 +0.5	5.9	15	30	12	7	21	2.3	0.5	14	12
GN.38716	GN 114.2-6-16	6	7.3 +0.5	5.9	15	30	16	7	21	2.3	0.5	14	13
GN.38717	GN 114.2-6-20	6	7.3 +0.5	5.9	15	30	20	7	21	2.3	0.5	14	14
GN.38718	GN 114.2-6-25	6	7.3 +0.5	5.9	15	30	25	7	21	2.3	0.5	14	14
GN.38719	GN 114.2-6-30	6	7.3 +0.5	5.9	15	30	30	7	21	2.3	0.5	14	15
GN.78202	GN 114.2-6-35	6	7.3 +0.5	5.9	15	30	35	7	21	2.3	0.5	14	16
GN.38720	GN 114.2-6-40	6	7.3 +0.5	5.9	15	30	40	7	21	2.3	0.5	14	17
GN.78203	GN 114.2-6-45	6	7.3 +0.5	5.9	15	30	45	7	21	2.3	0.5	14	18
GN.78204	GN 114.2-6-50	6	7.3 +0.5	5.9	15	30	50	7	21	2.3	0.5	14	18
GN.78205	GN 114.2-6-60	6	7.3 +0.5	5.9	15	30	60	7	21	2.3	0.5	14	23
GN.78206	GN 114.2-6-70	6	7.3 +0.5	5.9	15	30	70	7	21	2.3	0.5	14	23
GN.78207	GN 114.2-6-80	6	7.3 +0.5	5.9	15	30	80	7	21	2.3	0.5	14	27
GN.78211	GN 114.2-8-10	8	9.8 +0.5	7.9	15	30	10	8.4	21	2.8	0.6	28	26
GN.78212	GN 114.2-8-16	8	9.8 +0.5	7.9	15	30	16	8.4	21	2.8	0.6	28	16
GN.38721	GN 114.2-8-20	8	9.8 +0.5	7.9	15	30	20	8.4	21	2.8	0.6	28	25
GN.38723	GN 114.2-8-25	8	9.8 +0.5	7.9	15	30	25	8.4	21	2.8	0.6	28	27
GN.38725	GN 114.2-8-30	8	9.8 +0.5	7.9	15	30	30	8.4	21	2.8	0.6	28	21
GN.78213	GN 114.2-8-35	8	9.8 +0.5	7.9	15	30	35	8.4	21	2.8	0.6	28	29
GN.38727	GN 114.2-8-40	8	9.8 +0.5	7.9	15	30	40	8.4	21	2.8	0.6	28	32
GN.78214	GN 114.2-8-45	8	9.8 +0.5	7.9	15	30	45	8.4	21	2.8	0.6	28	34
GN.38729	GN 114.2-8-50	8	9.8 +0.5	7.9	15	30	50	8.4	21	2.8	0.6	28	35
GN.78215	GN 114.2-8-60	8	9.8 +0.5	7.9	15	30	60	8.4	21	2.8	0.6	28	41
GN.78216	GN 114.2-8-70	8	9.8 +0.5	7.9	15	30	70	8.4	21	2.8	0.6	28	47
GN.78217	GN 114.2-8-80	8	9.8 +0.5	7.9	15	30	80	8.4	21	2.8	0.6	28	50
GN.78218	GN 114.2-8-90	8	9.8 +0.5	7.9	15	30	90	8.4	21	2.8	0.6	28	52
GN.78219	GN 114.2-8-100	8	9.8 +0.5	7.9	15	30	100	8.4	21	2.8	0.6	28	54



Kod	Benämning	d1-0.1	d2	d3	d4	d5	l1+0.4	l2	l3	a	b	Dubbelsidig klippkraft [KN]	⚖️
GN.78231	GN 114.2-10-15	10	11.7 +1	9.9	18	34	15	9.8	26	3.3	1	38	24
GN.38731	GN 114.2-10-20	10	11.7 +1	9.9	18	34	20	9.8	26	3.3	1	38	26
GN.38733	GN 114.2-10-25	10	11.7 +1	9.9	18	34	25	9.8	26	3.3	1	38	28
GN.38735	GN 114.2-10-30	10	11.7 +1	9.9	18	34	30	9.8	26	3.3	1	38	31
GN.78232	GN 114.2-10-35	10	11.7 +1	9.9	18	34	35	9.8	26	3.3	1	38	33
GN.38737	GN 114.2-10-40	10	11.7 +1	9.9	18	34	40	9.8	26	3.3	1	38	35
GN.78233	GN 114.2-10-45	10	11.7 +1	9.9	18	34	45	9.8	26	3.3	1	38	37
GN.38739	GN 114.2-10-50	10	11.7 +1	9.9	18	34	50	9.8	26	3.3	1	38	39
GN.78234	GN 114.2-10-60	10	11.7 +1	9.9	18	34	60	9.8	26	3.3	1	38	44
GN.78235	GN 114.2-10-70	10	11.7 +1	9.9	18	34	70	9.8	26	3.3	1	38	49
GN.78236	GN 114.2-10-80	10	11.7 +1	9.9	18	34	80	9.8	26	3.3	1	38	54
GN.78237	GN 114.2-10-90	10	11.7 +1	9.9	18	34	90	9.8	26	3.3	1	38	60
GN.78238	GN 114.2-10-100	10	11.7 +1	9.9	18	34	100	9.8	26	3.3	1	38	63
GN.78239	GN 114.2-10-110	10	11.7 +1	9.9	18	34	110	9.8	26	3.3	1	38	67
GN.78240	GN 114.2-10-120	10	11.7 +1	9.9	18	34	120	9.8	26	3.3	1	38	73
GN.78251	GN 114.2-12-20	12	13.7 +1	11.9	18	34	20	11.3	26	3.8	1	61	33
GN.38741	GN 114.2-12-25	12	13.7 +1	11.9	18	34	25	11.3	26	3.8	1	61	37
GN.38743	GN 114.2-12-30	12	13.7 +1	11.9	18	34	30	11.3	26	3.8	1	61	41
GN.78252	GN 114.2-12-35	12	13.7 +1	11.9	18	34	35	11.3	26	3.8	1	61	44
GN.38745	GN 114.2-12-40	12	13.7 +1	11.9	18	34	40	11.3	26	3.8	1	61	48
GN.78253	GN 114.2-12-45	12	13.7 +1	11.9	18	34	45	11.3	26	3.8	1	61	51
GN.38747	GN 114.2-12-50	12	13.7 +1	11.9	18	34	50	11.3	26	3.8	1	61	55
GN.38749	GN 114.2-12-60	12	13.7 +1	11.9	18	34	60	11.3	26	3.8	1	61	62
GN.78254	GN 114.2-12-70	12	13.7 +1	11.9	18	34	70	11.3	26	3.8	1	61	69
GN.78255	GN 114.2-12-80	12	13.7 +1	11.9	18	34	80	11.3	26	3.8	1	61	76
GN.78256	GN 114.2-12-90	12	13.7 +1	11.9	18	34	90	11.3	26	3.8	1	61	90
GN.78257	GN 114.2-12-100	12	13.7 +1	11.9	18	34	100	11.3	26	3.8	1	61	95
GN.78258	GN 114.2-12-110	12	13.7 +1	11.9	18	34	110	11.3	26	3.8	1	61	102
GN.78259	GN 114.2-12-120	12	13.7 +1	11.9	18	34	120	11.3	26	3.8	1	61	112
GN.38790	GN 114.2-16-30	16	18.7 +1	15.9	22	40	30	14.2	32	4.8	1.2	113	78
GN.38791	GN 114.2-16-35	16	18.7 +1	15.9	22	40	35	14.2	32	4.8	1.2	113	85
GN.78271	GN 114.2-16-40	16	18.7 +1	15.9	22	40	40	14.2	32	4.8	1.2	113	92
GN.78272	GN 114.2-16-45	16	18.7 +1	15.9	22	40	45	14.2	32	4.8	1.2	113	85
GN.38792	GN 114.2-16-50	16	18.7 +1	15.9	22	40	50	14.2	32	4.8	1.2	113	104
GN.38793	GN 114.2-16-60	16	18.7 +1	15.9	22	40	60	14.2	32	4.8	1.2	113	118
GN.38794	GN 114.2-16-70	16	18.7 +1	15.9	22	40	70	14.2	32	4.8	1.2	113	133
GN.78273	GN 114.2-16-80	16	18.7 +1	15.9	22	40	80	14.2	32	4.8	1.2	113	144
GN.78274	GN 114.2-16-90	16	18.7 +1	15.9	22	40	90	14.2	32	4.8	1.2	113	147
GN.78275	GN 114.2-16-100	16	18.7 +1	15.9	22	40	100	14.2	32	4.8	1.2	113	173
GN.78276	GN 114.2-16-110	16	18.7 +1	15.9	22	40	110	14.2	32	4.8	1.2	113	186
GN.78277	GN 114.2-16-120	16	18.7 +1	15.9	22	40	120	14.2	32	4.8	1.2	113	199
GN.78278	GN 114.2-16-130	16	18.7 +1	15.9	22	40	130	14.2	32	4.8	1.2	113	213
GN.78279	GN 114.2-16-140	16	18.7 +1	15.9	22	40	140	14.2	32	4.8	1.2	113	226
GN.78280	GN 114.2-16-150	16	18.7 +1	15.9	22	40	150	14.2	32	4.8	1.2	113	239





Kod	Benämning	d1 -0.1	d2	d3	d4	d5	l1 +0.4	l2	l3	a	b	Dubbelsidig klippkraft [KN]	
GN.38941	GN 114.2-20-30	20	22.7 +1	19.8	22	40	30	14.8	33	4.8	1.2	187	125
GN.38942	GN 114.2-20-35	20	22.7 +1	19.8	22	40	35	14.8	33	4.8	1.2	187	136
GN.38943	GN 114.2-20-40	20	22.7 +1	19.8	22	40	40	14.8	33	4.8	1.2	187	147
GN.78291	GN 114.2-20-45	20	22.7 +1	19.8	22	40	45	14.8	33	4.8	1.2	187	158
GN.38944	GN 114.2-20-50	20	22.7 +1	19.8	22	40	50	14.8	33	4.8	1.2	187	169
GN.38945	GN 114.2-20-60	20	22.7 +1	19.8	22	40	60	14.8	33	4.8	1.2	187	191
GN.38946	GN 114.2-20-70	20	22.7 +1	19.8	22	40	70	14.8	33	4.8	1.2	187	214
GN.38947	GN 114.2-20-80	20	22.7 +1	19.8	22	40	80	14.8	33	4.8	1.2	187	234
GN.78292	GN 114.2-20-90	20	22.7 +1	19.8	22	40	90	14.8	33	4.8	1.2	187	258
GN.78293	GN 114.2-20-100	20	22.7 +1	19.8	22	40	100	14.8	33	4.8	1.2	187	277
GN.78294	GN 114.2-20-110	20	22.7 +1	19.8	22	40	110	14.8	33	4.8	1.2	187	302
GN.78295	GN 114.2-20-120	20	22.7 +1	19.8	22	40	120	14.8	33	4.8	1.2	187	326
GN.78296	GN 114.2-20-130	20	22.7 +1	19.8	22	40	130	14.8	33	4.8	1.2	187	350
GN.78297	GN 114.2-20-140	20	22.7 +1	19.8	22	40	140	14.8	33	4.8	1.2	187	368
GN.78298	GN 114.2-20-150	20	22.7 +1	19.8	22	40	150	14.8	33	4.8	1.2	187	395

Fixturdetaljer

3